

FIRE BELT

IRON / POLISHED BRONZE, 1969



The Fire Belt is handmade in iron and polished bronze, both materials preferred by Wabbes for their particular patina once regularly used and blackened by fire.

This ingenious model describes one elegant curve around the fireplace. Its shape is directly inspired by the one of a regular leather belt. Its design allows the piece to adjust itself in width, by simply gliding its two parts through the two buckles.

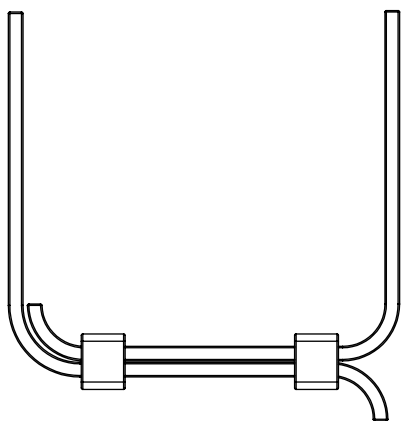
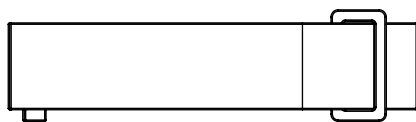
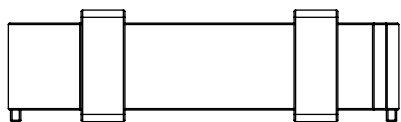
This model was created in 1969 for GEDE.

INFO@GENERALDECORATION.COM
WWW.GENERALDECORATION.COM

GEDE

FIRE BELT

IRON / POLISHED BRONZE, 1969



DIMENSIONS (MM)			WEIGHT	FINISHES
LENGHT	WIDTH	HEIGHT	5,4 Kg	Iron / Polished Bronze
280	260-400	75		
GENERALDECORATION			SPRL GENERAL DECORATION 20 ROUTE DE BEAUMONT 1380 LASNE	